

Attentional saliency in images

Students pick an image and circle regions that appear to draw attention to themselves: salient regions.

The instructor runs the images through the Itti-Koch saliency algorithm, which marks pixels that ought to jump out at viewers because they represent regions that are different from their surroundings.

[Background and instructions given to students](#)

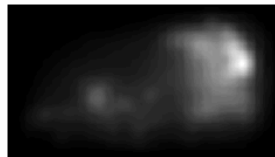
Sample results

The algorithm identifies image regions that stand out based on several basic visual features, including color, intensity and edge orientation.

original image



Itti-Koch saliency map



marked image



saliency map overlaid



most salient (95%ile) parts

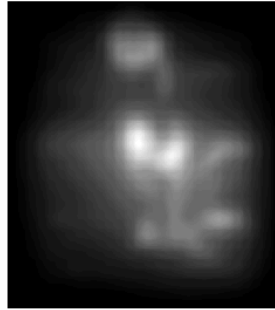


It sometimes appears that the algorithm is picking out complex objects that are similar to what humans ultimately notice ...

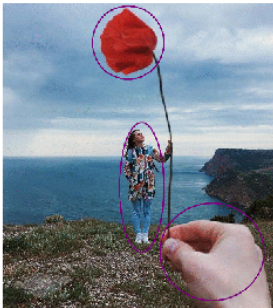
original image



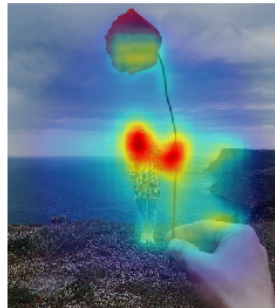
Itti-Koch saliency map



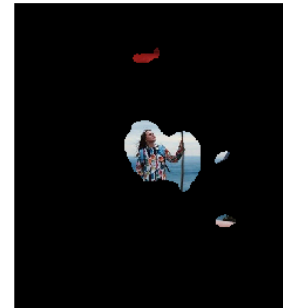
marked image

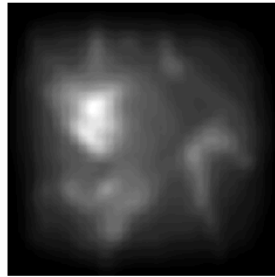
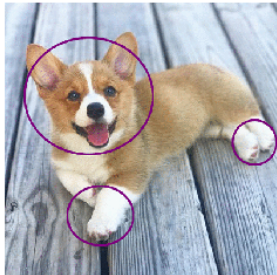
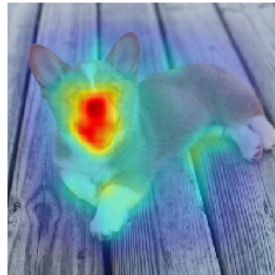
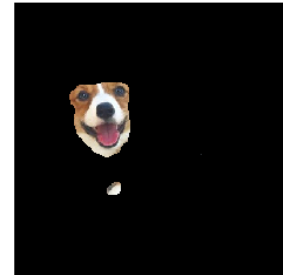


saliency map overlaid



most salient (95%ile) parts



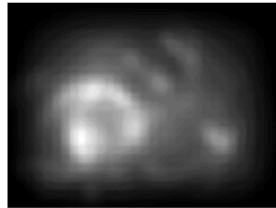
original image**Itti-Koch saliency map****marked image****saliency map overlaid****most salient (95%ile) parts**

... however, the algorithm actually works in “local” fashion based on small, often meaningless visual differences.

original image



Itti-Koch saliency map



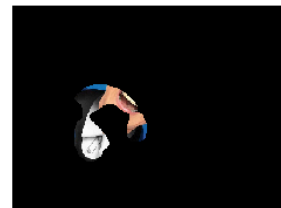
marked image



saliency map overlaid



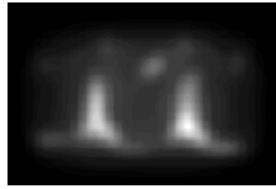
most salient (95%ile) parts



original image



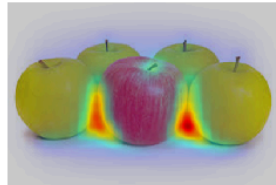
Itti-Koch saliency map



marked image



saliency map overlaid



most salient (95%ile) parts



From:

<https://wiki.anthonycate.org/> - Visual Cognitive Neuroscience

Permanent link:

https://wiki.anthonycate.org/doku.php?id=teaching:saliency:saliency_assignment&rev=1569106437

Last update: 2019/09/21 18:53

